

# 北九州学術研究都市

## 2022 - 2023



# KSRP

Kitakyushu Science and Research Park

<https://www.ksrp.or.jp/>



Kitakyushu Foundation for the Advancement of Industry,  
Science and Technology (FAIS)

# Features of Kitakyushu Science and Research Park

## Universities and Research Institutes Related to Science, Engineering, and Research Departments of Companies Located on Campus

- National, municipal, and private universities (1 faculty, 4 graduate schools)  
Faculty and Graduate School of Environmental Engineering, The University of Kitakyushu Graduate School of Life Science and Systems Engineering, Kyushu Institute of Technology Graduate School of Information, Production and Systems, Waseda University Graduate School of Engineering, Fukuoka University
  - Public and private research institutes (13 research institutes)
  - Companies involved in research and development (43 companies)
- (As of May 2022)

## Common Educational and Research Principles among Universities on the Campus

- Conducting advanced education and research in the fields of cutting-edge science technology
- Promotion of collaboration between industry and academia
- Nurturing an entrepreneurial spirit
- Establishing a center for academic research in Asia

## Exchange and Collaboration among Researchers, Staff, and Students

- Joint research and faculty exchanges among participating universities
- Transferable credits to other universities
- Operating joint graduate school programs of participating universities on the campus  
Joint Graduate School Intelligent Car, Robotics & AI

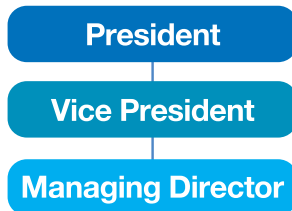
## Cooperative Campus Management & Common Use of Facilities

- The Kitakyushu Science and Research Park steering committee is composed of representatives from universities within the campus, and plans for joint endeavors
- Common use of libraries, information processing facilities, convenient facilities, and others

# Operation and management of the Kitakyushu Science and Research Park

## Kitakyushu Foundation for the Advancement of Industry, Science and Technology (FAIS)

### FAIS Organizational Structure



#### ● General Affairs Office

The office carries out joint operations of the Kitakyushu Science and Research Park. It administers shared usage of facilities within KSRP, and Promotes partnerships and exchanges among universities participating in KSRP.

#### ● Innovation Center

##### ● Collaboration Department

At the heart of the Kitakyushu Science and Research Park, the Innovation Center promotes the revitalization of local companies and creation of new industries through the formation of networks promoting collaboration between industry and academia, creation and operation of new projects, and support for the development new commercial ventures.

#### ● Support Center for the Auto Industry and the Manufacturing Sector

##### ● Business Promotion Department

The Automotive Monozukuri(manufacturing) Support Center helps small- and medium-sized enterprises (SMEs) and other local companies increase their industrial competitiveness with support for innovating business operations and R&D, as well as for applying for government subsidies for manufacturing and business restructuring.

##### ● Automotive Industry Promotion Department

The Car Electronics Group provides support for human resource development, local companies and R&D in order to promote the development of a hub for the automotive industry through collaboration among industries, academia And the government. The group supports educational programs at partner graduate schools managed by three universities in the Science & Research Park, helps improve education and productivity by dispatching advisors to local companies, and promotes joint research and development based on research activities in coordination with company engineers and university researchers.

#### ● Robot & DX Promotion Center

The Kitakyushu Robot & DX Promotion Center provides one-stop support to meet the needs of local small- and medium-sized companies (SMEs) in introducing robots and promoting DX (e.g., introducing IoT and digitalizing business operations). As an active partner, the Center offers comprehensive and integrated support to local companies that are interested in introducing robots and promoting DX by providing assistance for the installation of robots in worksites, operating experience, human resources development and an extensive list of other services.

##### ● Robot Industry Promotion Department

In addition to managing the Kitakyushu Robot Forum, the Robot Industry Promotion Department implements projects to support the introduction of robots in local companies and activities to develop human resources to promote the robotics industry in Kitakyushu City.

##### ● DX Promotion Department

The DX Promotion Department manages the Kitakyushu DX Promotion Platform and Sler Network to support the advancement of local industries and the creation of new businesses. This department also dispatches experts to provide support to local companies that have set their sights on promoting DX and implements activities for managers and worksite leaders that focus on developing human resources.

#### ● SME Support Center

This center offers a one-stop service system for small and medium-sized enterprises(SME)and businesses. The SME Support Center provides consultation services and guidance on dispatching expert staff, using intellectual property, and other issues to support the efforts of individuals and small and medium-sized enterprises aiming to start up and improve or innovate business operations and management.



**Kitakyushu Foundation  
for the Advancement  
of Industry, Science and Technology**

● **President** : Morio Matsunaga

● **Board of Directors, etc.:**

**[Academia]**

Vice President of Kitakyushu Science and Research Park participating universities  
Presidents of Science and Technology universities in Kitakyushu City

**[Industry]**

The Chamber of Commerce and Industry, and other business organizations

**[Administration]**

Kitakyushu City, Fukuoka Prefecture

## About Kitakyushu Science and Research Park

Kitakyushu Science and Research Park (KRSP) opened in April 2001, aims to "further the development of technology and the creation of new industries" and "Technologies research center open to Asia" through a single campus integration of national, municipal and private universities that specialize in science and engineering. The four universities (and 1 undergraduate program) already based at the park are engaged in the training and research of cutting-edge science technologies, in particular, IT and biotechnology under the common philosophy of KSRP.

## Objectives of the Kitakyushu Science and Research Park

Utilizing the "intelligence" of universities to promote local industries and science

Technologies research center open to Asia

Promoting the creation of new industries and the further development of technology

Construction of a cutting-edge industrial city in Asia that creates new technology and enriches lives

## Kitakyushu Science and Research Park Project

### ● Fundamental policy

The Kitakyushu Science and Research Park draws inspiration from the rich natural and urban environment of the surrounding area in promoting the concept of "mixed-use development", where we have combined a concentration of educational and research institutes engaged in cutting-edge science and technology with a favorable and advantageous residential area.

● **Development areas** : Western section of Wakamatsu, Northwestern section of Yahatanishi

● **Total development area** : Approximately 335 ha

● **Planned population** : 12,000 (Daytime population)

### ● Construction schedule :

1st Stage Project (Approximately 121 ha)

1995 - 2006 ※Project completed

Developer : Urban Renaissance Agency

2nd Stage Project (Approximately 136 ha) 2002 - 2018

Developer : City of Kitakyushu

3rd Stage Project (Approximately 68 ha)

Under Consideration

River improvement (Approximately 10 ha)

### [Schematic drawing of land use plan (draft)]



### Daytime Population of Kitakyushu Science and Research Park (As of May 1, 2022)

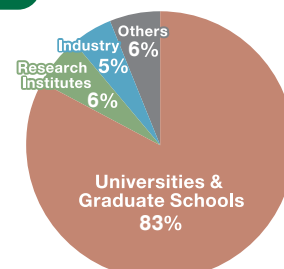
(1st Stage Project District Educational facilities and housing)

Approximately 3,500

**Students** 2,415 (including 796 foreign students)

**Faculty members** 167 (including 25 from industry)  
\*Only full-time faculty

**Researchers** 193 (including 63 foreign researchers)



# Universities, research institutes, companies, and facilities for industry-acade

## 1 The University of Kitakyushu

### Faculty of Environmental Engineering

■ Student capacity: 1020  
 Department of Chemical and Environmental Engineering  
 Department of Mechanical Systems Engineering  
 Department of Information and Media Engineering  
 Department of Architecture  
 Department of Life and Environment Engineering

### Graduate School of Environmental Engineering

■ Student capacity: 346  
 Graduate Programs in Environmental Systems  
 Graduate Programs in Environmental Engineering  
 Graduate Programs in Information Engineering  
 Contact: Press Department  
 +81-93-695-3311



## 2 Kyushu Institute of Technology



### Graduate School of Life Science and Systems Engineering

■ Student capacity: 352  
 Department of Biological Functions Engineering  
 Department of Human Intelligence Systems  
 Department of Life Science and Systems Engineering  
 Contact: Administratoin Office, School Affairs Divison +81-93-695-6003



## 3 Waseda University



### Graduate School of Information, Production and Systems

■ Student capacity: 460  
 Information Architecture  
 Production Systems  
 Integrated Systems  
 Contact: Administratoin Office +81-93-692-5017

## 4 Fukuoka University

### Graduate School of Engineering

■ Student capacity: 32  
 Graduate Program of Recycling and Eco-Technology  
 Energy and Environment Systems  
 Contact: Administratoin Office  
 +81-92-871-6631

## Numbers of students and professors

As of May 1, 2022

University	Undergraduate	Postgraduate	PhD	Research students	Special research students	Total number of students	Number of professors
The University of Kitakyushu Faculty of Environmental Engineering	1,118 (44)	— —	— —	1 (1)	0 (0)	1,119 (45)	84
The University of Kitakyushu Graduate School of Environmental Engineering	— —	289 (57)	135 (122)	0 (0)	0 (0)	424 (179)	—
Kyushu Institute of Technology Graduate School of Life Science and Systems Engineering	— —	228 (28)	105 (42)	3 (3)	0 (0)	336 (73)	44
Waseda University Graduate School of Information, Production and Systems	— —	438 (418)	89 (72)	5 (5)	1 (1)	533 (496)	37
Graduate School of Engineering, Fukuoka University	— —	3 (3)	0 (0)	0 (0)	0 (0)	3 (3)	2
<b>Total</b>	<b>1,118 (44)</b>	<b>958 (506)</b>	<b>329 (236)</b>	<b>9 (9)</b>	<b>1 (1)</b>	<b>2,415 (796)</b>	<b>167</b>

number in ( ) indicates the number of foreign students

\*Inside collaboration center

## A Collaboration Center

Collaboration Center Building 1



### Core facilities for pursuing research among industry, academia and government

The Fukuoka Research Commercialization Center for Recycling Systems and other research institutes, companies conducting cutting-edge research, and Graduate School of Engineering, Fukuoka University are located in the Center. In addition, the Collaboration Center is also equipped with a conference room and seminar room that can accommodate up to 100 visitors.

- Laboratories (31 rooms)
- Conference room, Seminar room (S, M)

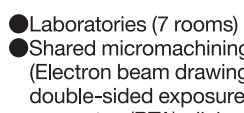
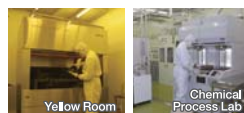
## B Semiconductor Center

Collaboration Center Building 2



### Facilities to support research and development of semiconductor microfabrication technology

This facility is for research and development of semiconductor manufacturing related fields by companies and universities. The facility offers use of high-precision machinery for research and development related to trial manufacturing of ICs and MEMS and is equipped with laboratories. The practical experiments on trial manufacturing of ICs (CMOS process) are also available.



- Laboratories (7 rooms)
- Shared micromachining devices for ICs and MEMS (Electron beam drawing apparatus, ion implanters, double-sided exposure apparatus, rapid heat treatment apparatus (RTA), dicing saw, bonding equipment, etc.)

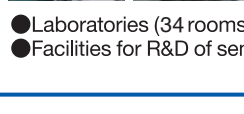
## C IT Advancement Center

Collaboration Center Building 3



### Facilities for conducting research and development on networks and semiconductor design

This facility is for research and development related to semiconductor design technology and advanced information and communication technology by companies and universities.



- Laboratories (34 rooms)
- Facilities for R&D of semiconductor design

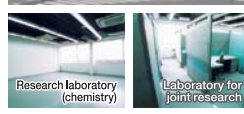
## D Business Venture Support Center

Collaboration Center Building 4



### Facilities to support R&D and commercialization for starting up new businesses from campus ventures

This facility provides general office clerical, mechanical and chemical laboratories and small booth units are available in the joint laboratory.



- Laboratories (36 rooms) Large Laboratories, Chemical Laboratories
- Conference room (S,M)
- Collaborative Laboratory (10 booths)
- Share office

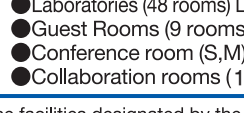
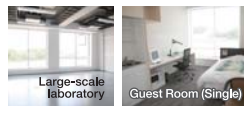
## E Technology Development and Exchange Center

Collaboration Center Building 5



### Facilities to support technological innovation and promote DX in the robotics and automotive electronics fields

This Center houses facilities to support technological innovation for the introduction of robots and automotive electronics and to promote DX (introducing IoT and digitalizing business operations). The Center is also furnished with guest accommodations for visitors who stay at KSRP to engage in research.



- Laboratories (48 rooms) Large Laboratories, Chemical Laboratories
- Guest Rooms (9 rooms) 8 single rooms, 1 twin room
- Conference room (S,M)
- Collaboration rooms (1 rooms)

## F Media Center

Library, Information Processing Facility



### Multimedia station, integration, and transmission of Information

In addition to its function as a library for collecting and providing academic information and as an educational facility for information processing, the Media Center houses facilities for teleconferencing and the production of information content.

### Laboratory Rental Fees

◎2,000 yen/m<sup>2</sup> per month (Common fees : 500 yen/m<sup>2</sup> per month)  
(Example: In the case of a laboratory that is 50 m<sup>2</sup> the approximate fee is 1.5 million yen per year (common fees are not included))

In addition to universities, an increasing number of research institutes and R&D-oriented companies are relocating their operations to the Kitakyushu Science and Research Park, an area replete with facilities dedicated to collaboration between industry and academia. The dynamic entrepreneurial spirit harnessing the seeds planted in the rich scholastic environment of universities in the Kitakyushu Science and Research Park is palpable, with 13 venture companies putting down roots in the park.

As of May 1, 2022

	Name of Research Institution	Location	Research Content
1	Institute of Environmental Science and Technology, The University of Kitakyushu	The University of Kitakyushu	Strategic promotion of research and technology development in the fields of the environment, energy, biomaterials, information, robot technologies, and others to respond to changes in the global environment and the needs of local society.
2	Institute of Environmental Science and Technology, The University of Kitakyushu Green LPG Lab	Business Venture Support Center	Research on new LP gas technologies
3	Kyushu Institute of Technology, Research Center for Next-Generation Power Electronics	Kyushu Institute of Technology and Semiconductor Center	Research on next-generation power electronics focusing on power semiconductors that can contribute to the development of a low-carbon society, such as the promotion of energy savings and the application of advanced technologies for electric power and natural energy.
4	Center for Socio-Robotic Synthesis, Kyushu Institute of Technology	Kyushu Institute of Technology and IT Advancement Center	<ul style="list-style-type: none"> <li>○Development and practical application of specialized environmental robots capable of operating in extreme environments</li> <li>○Development and practical application of medical and nursing care robots</li> <li>○Development and practical application of technologies supporting factory automation</li> <li>○Development of open software capable of assuring quality to support the practical application of reliable robots</li> </ul>
5	Information, Production and Systems Research Center, Waseda University	Information, Production and Systems Research Center, Waseda University	World-class, advanced research and human resources development in the fields of automotive electronics and LSI.
6	Academic, Industrial and Governmental Liaison Center, Fukuoka University Kitakyushu Industry-Academia Cooperation Promotion Office	Collaboration Center	Expansion of the promotion of environmental industries through industrial, academic, and government collaboration to match corporate needs of environmental industries and the policies and seeds of municipal governments.
7	Fuzzy Logic Systems Institute Imasato's Laboratory	Semiconductor Center and Technology Development and Exchange Center	Test studies on information processing systems that apply fuzzy logic.
8	HiBD Laboratory Association	Collaboration Center and Business Venture Support Center	Research and development on the manufacturing of liquid fuel from renewable resources and carbon dioxide.
9	Japan unmanned Vehicle exploration agency	Collaboration Center	Advancing and disseminating research on unmanned vehicles by serving as a space for sharing knowledge and information on surveys, research and technological improvements in all areas related to unmanned vehicles.
10	Fukuoka Research Commercialization Center for Recycling Systems	Collaboration Center	Supporting R&D and business development by industries, academia, government and the public that are engaged in the development of recycling technologies and the establishment of social systems to build a resource-recycling society.
11	Martial Arts School	Business Venture Support Center	NPO applying small brain activity sensors to measure blood flow in the prefrontal cortex during exercise and movement
12	Asobito Manabi (Institute for Playing and Learning)	Business Venture Support Center	Specified non-profit corporation engaged in practical studies on promoting optimal ways to reduce food waste in communities using bamboo compost
13	Fukuoka Recurrent Education Promotion Association	Business Venture Support Center	Research and dissemination of information on recurrent education and professional development for working adults and students (with special focus on women)

Resident Location	Company Name	Current Business Content
Collaboration Center	1 INFOGRAM Inc., Kitakyushu Branch Office	System development, computer educational services, internet services, and all incidental work related to the preceding items
	2 ISHIDA PATENT OFFICE	Proxy for application procedures for patents and registration of utility models, designs, and trademarks, consulting services on filing patent applications
	3 PLANTMAKE RISE	Development of coating agents for incinerator facilities, development of structural calculation software using 3D scanners
	4 KOISHI CO., LTD	Development of technologies for application on construction sites
Semiconductor Center	5 Security Information Laboratory	Systems development and maintenance (24 hours a day, 365 days a year)
	6 K2R Inc.	Research and development on water generation equipment containing radical species using catalytic reactions
IT Advancement Center	7 Windy Co.,Ltd.	Development of software used at hospitals and pharmacies, development of work analysis software used at automobile plants
	8 Mishimakosan Co.,Ltd.	Development and manufacturing of automatic drug dispensers to remove wrappers and pharmaceutical-related equipment
	9 ● RoboPlus Hibikino Co.,Ltd.	Design, manufacturing, and sales of mechatronics, consulting services
	10 ITS Inc.	Research and development on electronic parts, such as semiconductor integrated circuits
Business Venture Support Center	11 ● BE Corporation	Research and development on image processing systems and software
	12 ● Technology for Laboratory Inc.	Development and sales of clinical engineering educational equipment and optical transmission bio-signal measuring devices
	13 ● BraTech Co.,Ltd.	Development of web systems, academic solution programs
	14 Anera Tax Corporation	Auditing services, tax document preparation, tax proxy services, tax consulting services
	15 AKSystem Co.,Ltd	Research and development on applications for new industrial fields (Medical and welfare field), such as techniques to fabricate manufacturing equipment for semiconductors
	16 ● Artix,inc	Research and development on IoT, artificial intelligence, blockchain technology, other
	17 ● CCAS Co.,Ltd.	Research and development on manufacturing systems for modified fly ash concrete
	18 HOKOSHA TECHNOLOGIES CO.,LTD	Research and development on curved surface wiring technologies using molecular adhesion technologies and high-luminance, highly-reliable LED lighting
	19 Rare Metal Research and Development Inc.	Commercialization of lithium adsorbent through high-volume synthesis
	20 TuSimple JAPAN	Research and development, design, and sales of autonomous driving technology for vehicles
	21 ENVIRONMENT ENERGY CO.,LTD	Development and practical applications of bio-jet fuel, development of high-quality bio-diesel fuel
	22 ● Hibikino electronic corporation	Development of electrical field resonance-type bio-sensing and sensing data analysis systems
	23 ● Kankyuu Photonics Co.,Ltd.	Research, development, and sales of LED light sources for plant growth
	24 Q-Cul LLC.	Research and development on embedded software
	25 WORKS Co.,Ltd	Development of precision plastic injection molding technologies
	26 ● Robo science CO.,LTD	Research and development of underwater robots and related products
	27 Apollo Japan Co,Ltd	Development of basic technologies for screen codes and autonomous driving
	28 HM Connect	Verification of the effectiveness of disinfectants, antibacterial and deodorizing solutions and development of products with long-lasting and sustained effects Development of LED light staging devices featuring laser-engraved patterns inside crystal glass
	29 ● Mathematical science labo	Research and development projects related to mathematical sciences
	30 Organization for Career Education & Support (OCES)	Career guidance in secondary education, career education, and education for career counseling
31 ● Hynts Tech Corporation	Development, manufacturing and sales of tools using nanostructures for introducing substances into cells or extracting intracellular substances	
32 Kusakakikaku	Research, development, and production of socks and non-slip materials for socks (made-in-Japan) for the elderly and other related areas	
33 LOVO & Co.	Development of smart factories using production equipment on the cloud	
Technology Development and Exchange Center	34 Shikino High-Tech Co.,LTD	Design/manufacturing/control of semiconductor equipment, LSI circuit design/layout, other
	35 YOSHIKAWA KOGYO RF SOLUTION CENTER	Research and development projects on RF-ID
	36 C&G SYSTEMS INC.	Development of CAD/CAM software for mold design and processing
	37 Shabondama Soap Co.,Ltd.	Manufacturing and sales of additive-free cosmetic soap, household cleaners, fire retardants, other
	38 TORICO LTD	Development and repair of electrical parts
	39 ● FILTOM, INC.	Development, manufacturing, and sales of cosmetics using placenta extract (placenta fluids from pigs)
	40 AISIN CORPORATION	Development of elemental technologies, such as image recognition/spatial recognition, and vehicle control
	41 KYOTO ELECTRONICS MANUFACTURING CO., LTD.	Development of prototypes and evaluations to establish technical elements for the manufacturing of new sensors
	42 ● Secure Cycle Inc.	Development of general platforms for behavior recognition technologies and security
	43 KOA CORPORATION	Information collection and information exchange on electronic parts, sensor elements, and sensor modules, joint industry-academic development

\* ●Indicates new business from KSRP ventures (13 companies)



# Contact Information: Kitakyushu Foundation for the Advancement of Industry, Science and Technology (FAIS)

【Kitakyushu Science and Research Park website】 <https://www.ksrp.or.jp/>

【Kitakyushu FAIS website】 <https://www.ksrp.or.jp/fais/>

General Information for the Kitakyushu Science and Research Park		E-mail : <a href="mailto:info@ksrp.or.jp">info@ksrp.or.jp</a>
<b>General Affairs Office</b>	TEL +81-93-695-3111 FAX +81-93-695-3010	Kitakyushu Science and Research Park, Collaboration Center 1st Floor, 2-1 Hibikino, Wakamatsu-ku, Kitakyushu 808-0135
Inquiries about the Media Center		
<b>Media Center</b>	TEL +81-93-695-3150 FAX +81-93-695-3152	Kitakyushu Science and Research Park, Media Center 2st Floor, 1-3 Hibikino, Wakamatsu-ku, Kitakyushu 808-0135
<b>Library</b>	TEL +81-93-695-3151 FAX +81-93-695-3152	
Inquiries on the use of research content at universities, industry-academia collaboration, and other R&D projects		E-mail : <a href="mailto:iac@ksrp.or.jp">iac@ksrp.or.jp</a>
<b>Innovation Center Collaboration Department</b>	TEL +81-93-695-3006 FAX +81-93-695-3018	Kitakyushu Science and Research Park, Collaboration Center 2st Floor, 2-1 Hibikino, Wakamatsu-ku, Kitakyushu 808-0135
Inquiries about R&D, human resources development, and other business operations in the automotive and semiconductor fields E-mail : <a href="mailto:car@ksrp.or.jp">car@ksrp.or.jp</a>		
<b>Support Center for the Auto Industry and the Manufacturing Sector</b>		
<b>Business Promotion Department</b>	TEL +81-93-695-3007 FAX +81-93-695-3686	Kitakyushu Science and Research Park, Collaboration Center 2st Floor, 2-1 Hibikino, Wakamatsu-ku, Kitakyushu 808-0135
<b>Automotive Industry Promotion Department</b>	TEL +81-93-695-3685 FAX +81-93-695-3686	
Inquiries about introducing robots and promoting DX (introducing IoT, digitalizing business operations, etc.)		E-mail : <a href="mailto:robotdx@ksrp.or.jp">robotdx@ksrp.or.jp</a>
<b>Robot &amp; DX Promotion Center</b>		
<b>Robot Industry Promotion Department</b>	TEL +81-93-695-3085 FAX +81-93-695-3525	Kitakyushu Science and Research Park, Technology Development and Exchange Center 1st Floor, 8-1 Hibikino-kita, Wakamatsu-ku, Kitakyushu 808-0138
<b>DX Promotion Department</b>	TEL +81-93-695-3077 FAX +81-93-695-3667	
<b>DX Promotion Department (FAIS Higashida Office)</b>	TEL +81-93-695-3077	Kyushu Human Media Creation Center 1-5-7 Higashida, Yahatahigashi-ku, Kitakyushu 805-0071
Inquiries related to establishing new businesses and management of SME		E-mail : <a href="mailto:k_info@ksrp.or.jp">k_info@ksrp.or.jp</a>
<b>SME Support Center</b>	TEL +81-93-873-1430 FAX +81-93-873-1450	Kitakyushu Techno Center 1st Floor, 2-1 Nakabarushin-machi, Tobata-ku, Kitakyushu 804-0003



**ACCESS**

**By Public Transportation**

- Bus stop at JR Orio Station West Exit — City Bus, Nishitetsu Bus —> Gakkentoshi(KSRP) Hibikino \*Approx. Time : 15 min.
- Bus stop at Kitakyushu Airport — Nishitetsu Bus —> Gakkentoshi(KSRP) Hibikino \*Approx. Time : 80 min.

**By Car**

- Kitakyushu Urban Expressway Kurosaki Ramp Use the Kurosaki/Orio exit and head towards Orio \*Approx. Time : 20 min., from the Kitakyushu Urban Expressway, Kurosaki Ramp
- Center of Kokura —> Kitakyushu Urban Expressway Higashida Ramp —> Kurosaki Bypass Kogasaki Ramp —> Gakkentoshi(KSRP) Hibikino \*Time required: Approx. 30 min., from the center of Kokura