

北九州学術研究都市

Kitakyushu Science and Research Park

2023-2024



Kitakyushu Foundation for the Advancement of Industry,
Science and Technology (FAIS)

About Kitakyushu Science and Research Park

Kitakyushu Science and Research Park (KRSP) opened in April 2001, aims to "further the development of technology and the creation of new industries" and "Technologies research center open to Asia" through a single campus integration of national, municipal and private universities that specialize in science and engineering. The four universities (and 1 undergraduate program) already based at the park are engaged in the training and research of cutting-edge science technologies, in particular, IT and biotechnology under the common philosophy of KSRP.

Objectives of the Kitakyushu Science and Research Park

Utilizing the “intelligence” of universities to promote local industries and science

Technologies research center open to Asia

Promoting the creation of new industries and the further development of technology

Construction of a cutting-edge industrial city in Asia
that creates new technology and enriches lives

Kitakyushu Science and Research Park Project

● Fundamental policy

The Kitakyushu Science and Research Park draws inspiration from the rich natural and urban environment of the surrounding area in promoting the concept of “mixed-use development”, where we have combined a concentration of educational and research institutes engaged in cutting-edge science and technology with a favorable and advantageous residential area.

● **Development areas** : Western section of Wakamatsu,
Northwestern section of Yahatanishi

● **Total development area** : Approximately 335 ha

● **Planned population** : 12,000 (Daytime population)

● Construction schedule :

1st Stage Project (Approximately 121 ha)

1995 - 2006 ※Project completed

Developer : Urban Renaissance Agency

2nd Stage Project (Approximately 136 ha) 2002 - 2018

Developer : City of Kitakyushu

3rd Stage Project (Approximately 68 ha)

Under Consideration

River improvement (Approximately 10 ha)

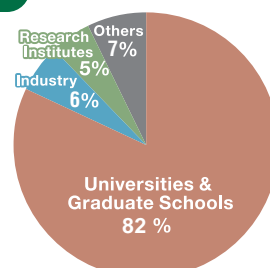
Daytime Population of Kitakyushu Science and Research Park (As of May 1, 2023)
(1st Stage Project District Educational facilities and housing)

Approximately 3,500

Students **2,409** (including 784 foreign students)

Faculty members *Only full-time faculty **168** (including 26 from industry)

Researchers **169** (including 65 foreign researchers)



[Schematic drawing of land use plan (draft)]



Features of Kitakyushu Science and Research Park

Universities and Research Institutes Related to Science, Engineering, and Research Departments of Companies Located on Campus

- National, municipal, and private universities (1 faculty, 4 graduate schools)
Faculty and Graduate School of Environmental Engineering, The University of Kitakyushu
Graduate School of Life Science and Systems Engineering, Kyushu Institute of Technology
Graduate School of Information, Production and Systems, Waseda University
Graduate School of Engineering, Fukuoka University
- Public and private research institutions (14 research institutes)
- Companies involved in research and development (46 companies)

(As of May 2023)

Exchange and Collaboration among Researchers, Staff, and Students

- Joint research and faculty exchanges among participating universities
- Transferable credits to other universities
- Operating joint graduate school programs of participating universities on the campus
Joint Graduate School Intelligent Car, Robotics & AI

Common Educational and Research Principles among Universities on the Campus

- Conducting advanced education and research in the fields of cutting-edge science technology
- Promotion of collaboration between industry and academia
- Nurturing an entrepreneurial spirit
- Establishing a center for academic research in Asia

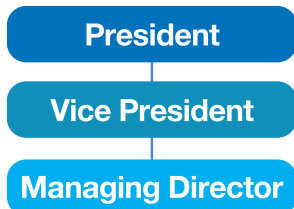
Cooperative Campus Management & Common Use of Facilities

- The Kitakyushu Science and Research Park steering committee is composed of representatives from universities within the campus, and plans for joint endeavors
- Common use of libraries, information processing facilities, convenient facilities, and others

Operation and management of the Kitakyushu Science and Research Park

Kitakyushu Foundation for the Advancement of Industry, Science and Technology (FAIS)

FAIS Organizational Structure



General Affairs Office (Media Center)

The office carries out joint operations of the Kitakyushu Science and Research Park. It administers shared usage of facilities within KSPP, and Promotes partnerships and exchanges among universities participating in KSPP.

Green Innovation Promotion Headquarters

Collaboration Department

Collaboration Department

At the heart of the Kitakyushu Science and Research Park, the Innovation Center promotes the revitalization of local companies and creation of new industries through the formation of networks promoting collaboration between industry and academia, creation and operation of new projects, and support for the development new commercial ventures.

Business Promotion Department

As a business management organization, the center is responsible for subsidy applications, promoting business plans and managing business operations so that small- and medium-sized companies can utilize R&D subsidies offered by the national government, such as the Go-Tech program, for research and development. The center also provides support to local companies to strengthen their manufacturing competitiveness and create new business opportunities.

Automotive Industry Support Center

The center offers a variety of support to local companies for human resources development and training, and research and development through collaboration between the automotive industry and academia in order to promote the development of a hub for the automotive industry. Support includes building up educational programs at partnering graduate schools, putting on-site improvements into practice at local companies by former employees of automobile manufacturers, and promoting joint research and development by matching company engineers with researchers at universities.

Semiconductor Industry Support Center

The center offers basic educational courses on semiconductors, promotes the development of sales channels and opportunities for exchange between companies, and provides technological and R&D support through industrial and academic partnerships with universities, in order to revitalize the semiconductor industry in the Kitakyushu region.

Robot & DX Promotion Center

The Kitakyushu Robot & DX Promotion Center provides one-stop support to meet the needs of local small- and medium-sized companies (SMEs) in introducing robots and promoting DX (e.g., introducing IoT and digitalizing business operations). As an active partner, the Center offers comprehensive and integrated support to local companies that are interested in introducing robots and promoting DX by providing assistance for the installation of robots in worksites, operating experience, human resources development and an extensive list of other services.

Robot Industry Promotion Department

In addition to managing the Kitakyushu Robot Forum, the Robot Industry Promotion Department implements projects to support the introduction of robots in local companies and activities to develop human resources to promote the robotics industry in Kitakyushu City.

DX Promotion Department

The DX Promotion Department manages the Kitakyushu DX Promotion Platform and Slier Network to support the advancement of local industries and the creation of new businesses. This department also dispatches experts to provide support to local companies that have set their sights on promoting DX and implements activities for managers and worksite leaders that focus on developing human resources.

SME Support Center

This center offers a one-stop service system for small and medium-sized enterprises (SMEs) and businesses. The SME Support Center provides consultation services and guidance on dispatching expert staff, using intellectual property, and other issues to support the efforts of individuals and small and medium-sized enterprises aiming to start up and improve or innovate business operations and management.



● **President**: Morio Matsunaga

● **Board of Directors, etc.:**

[Academia]

Vice President of Kitakyushu Science and Research Park participating universities
Presidents of Science and Technology universities in Kitakyushu City

[Industry]

The Chamber of Commerce and Industry, and other business organizations

[Administration]

Kitakyushu City, Fukuoka Prefecture

Universities, research institutes, companies, and facilities for industry-acade

1 The University of Kitakyushu

Faculty of Environmental Engineering

■Student capacity: 1020
Department of Chemical and Environmental Engineering
Department of Mechanical Systems Engineering
Department of Information and Media Engineering
Department of Architecture
Department of Life and Environment Engineering

Graduate School of Environmental Engineering

■Student capacity: 346
Graduate Programs in Environmental Systems
Graduate Programs in Environmental Engineering
Graduate Programs in Information Engineering
Contact:Press Department
+81-93-695-3311



2 Kyushu Institute of Technology



Graduate School of Life Science and Systems Engineering

■Student capacity: 352
Department of Biological Functions Engineering
Department of Human Intelligence Systems
Department of Life Science and Systems Engineering
Contact:Administratoin Office,School Affairs Division +81-93-695-6003



3 Waseda University



Graduate School of Information, Production and Systems

■Student capacity: 460
Information Architecture
Production Systems
Integrated Systems
Contact:Administratoin Office +81-93-692-5017

4 Fukuoka University

Graduate School of Engineering

■Student capacity: 14
Graduate Program of Recycling and Eco-Technology
Energy and Environment Systems
Contact:Administratoin Office
+81-92-871-6631

Numbers of students and professors

As of May 1, 2023

University	Undergraduate	Postgraduate	PhD	Research students	Special research students	Total number of students	Number of professors
The University of Kitakyushu Faculty of Environmental Engineering	1,104 (43)	— —	— —	1 (1)	0 (0)	1,105 (44)	84
The University of Kitakyushu Graduate School of Environmental Engineering	— —	305 (53)	150 (135)	0 (0)	0 (0)	455 (188)	—
Kyushu Institute of Technology Graduate School of Life Science and Systems Engineering	— —	217 (33)	107 (43)	3 (3)	1 (1)	328 (80)	43
Waseda University Graduate School of Information, Production and Systems	— —	417 (390)	99 (78)	0 (0)	2 (2)	518 (470)	39
Graduate School of Engineering, Fukuoka University	— —	3 (2)	0 (0)	0 (0)	0 (0)	3 (2)	2
Total	1,104 (43)	942 (478)	356 (256)	4 (4)	3 (3)	2,409 (784)	168

number in () indicates the number of foreign students

*Inside collaboration center

A Collaboration Center

Collaboration Center
Building 1



Core facilities for pursuing research among industry, academia and government

The Fukuoka Research Commercialization Center for Recycling Systems and other research institutes, companies conducting cutting-edge research, and Graduate School of Engineering, Fukuoka University are located in the Center. In addition, the Collaboration Center is also equipped with a conference room and seminar room that can accommodate up to 100 visitors.

- Laboratories (31 rooms)
- Conference room, Seminar room (S, M)



F Media Center

Library,
Information Processing Facility



Multimedia station, integration, and transmission of Information

In addition to its function as a library for collecting and providing academic information and as an educational facility for information processing, the Media Center houses facilities for teleconferencing and the production of information content.

Laboratory Rental Fees

◎2,000 yen/m² per month (Common fees : 500 yen/m² per month)
(Example: In the case of a laboratory that is 50 m² the approximate fee is 1.5 million yen per year (common fees are not included))

B Semiconductor Center

Collaboration Center
Building 2



Facilities to support research and development of semiconductor microfabrication technology

This facility is for research and development of semiconductor manufacturing related fields by companies and universities. The facility offers use of high-precision machinery for research and development related to trial manufacturing of ICs and MEMS and is equipped with laboratories.



- Laboratories (7 rooms)
- Shared micromachining devices for ICs and MEMS (Electron beam drawing apparatus, ion implanters, double-sided exposure apparatus, rapid heat treatment apparatus (RTA), dicing saw, bonding equipment, etc.)

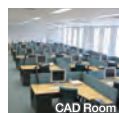
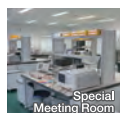
C IT Advancement Center

Collaboration Center
Building 3



Facilities for conducting research and development on networks and semiconductor design

This facility is for research and development related to semiconductor design technology and advanced information and communication technology by companies and universities.



- Laboratories (34 rooms)
- Facilities for R&D of semiconductor design

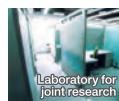
D Business Venture Support Center

Collaboration Center
Building 4



Facilities to support R&D and commercialization for starting up new businesses from campus ventures

This facility provides general office clerical, mechanical and chemical laboratories and small booth units are available in the joint laboratory.



- Laboratories (36 rooms) Large Laboratories, Chemical Laboratories
- Conference room (S,M)
- Collaborative Laboratory (10 booths)
- Share office

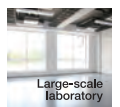
E Technology Development and Exchange Center

Collaboration Center
Building 5



Facilities to support technological innovation and promote DX in the robotics and automotive electronics fields

This Center houses facilities to support technological innovation for the introduction of robots and automotive electronics and to promote DX (introducing IoT and digitalizing business operations). The Center is also furnished with guest accommodations for visitors who stay at KSRP to engage in research.



- Laboratories (48 rooms) Large Laboratories, Chemical Laboratories
- Guest Rooms (9 rooms) 8 single rooms, 1 twin room
- Conference room (S,M)
- Collaboration rooms (1 rooms)

In addition to universities, an increasing number of research institutes and R&D-oriented companies are relocating their operations to the Kitakyushu Science and Research Park, an area replete with facilities dedicated to collaboration between industry and academia. The dynamic entrepreneurial spirit harnessing the seeds planted in the rich scholastic environment of universities in the Kitakyushu Science and Research Park is palpable, with 14 venture companies putting down roots in the park.

As of May 1, 2023

	Name of Research Institution	Location	Research Content
1	Institute of Environmental Science and Technology, The University of Kitakyushu	The University of Kitakyushu	Strategic promotion of research and technology development in the fields of the environment, energy, biomaterials, information, robot technologies, and others to respond to changes in the global environment and the needs of local society.
2	Institute of Environmental Science and Technology, The University of Kitakyushu Green LPG Lab	Business Venture Support Center	Research on new LP gas technologies
3	Fukuda Lab, The University of Kitakyushu	IT Advancement Center	Research on commercializing "adhesive-molding decorative core materials" for wooden shafts in apartment buildings
4	Kyushu Institute of Technology, Research Center for Next-Generation Power Electronics	Kyushu Institute of Technology and Semiconductor Center	Research on next-generation power electronics focusing on power semiconductors that can contribute to the development of a low-carbon society, such as the promotion of energy savings and the application of advanced technologies for electric power and natural energy.
5	Center for Socio-Robotic Synthesis, Kyushu Institute of Technology	Kyushu Institute of Technology and IT Advancement Center	<ul style="list-style-type: none"> ○Development and practical application of specialized environmental robots capable of operating in extreme environments ○Development and practical application of medical and nursing care robots ○Development and practical application of technologies supporting factory automation ○Development of open software capable of assuring quality to support the practical application of reliable robots
6	Information, Production and Systems Research Center, Waseda University	Information, Production and Systems Research Center, Waseda University	World-class, advanced research and human resources development in the fields of automotive electronics and LSI.
7	Academic, Industrial and Governmental Liaison Center, Fukuoka University Kitakyushu Industry-Academia Cooperation Promotion Office	Collaboration Center	Expansion of the promotion of environmental industries through industrial, academic, and government collaboration to match corporate needs of environmental industries and the policies and seeds of municipal governments.
8	Fuzzy Logic Systems Institute Imasato's Laboratory	Semiconductor Center and Technology Development and Exchange Center	Test studies on information processing systems that apply fuzzy logic.
9	HiBD Laboratory Association	Collaboration Center and Business Venture Support Center	Research and development on the manufacturing of liquid fuel from renewable resources and carbon dioxide.
10	Japan unmanned Vehicle exploration agency	Collaboration Center	Advancing and disseminating research on unmanned vehicles by serving as a space for sharing knowledge and information on surveys, research and technological improvements in all areas related to unmanned vehicles.
11	Fukuoka Research Commercialization Center for Recycling Systems	Collaboration Center	Supporting R&D and business development by industries, academia, government and the public that are engaged in the development of recycling technologies and the establishment of social systems to build a resource-recycling society.
12	Martial Arts School	Business Venture Support Center	NPO applying small brain activity sensors to measure blood flow in the prefrontal cortex during exercise and movement
13	Asobito Manabi (Institute for Playing and Learning)	Business Venture Support Center	Specified non-profit corporation engaged in practical studies on promoting optimal ways to reduce food waste in communities using bamboo compost
14	Fukuoka Recurrent Education Promotion Association	Business Venture Support Center	Research and dissemination of information on recurrent education and professional development for working adults and students (with special focus on women)

	Resident Location	Company Name	Current Business Content
1	Collaboration Center	INFOGRAM Inc., Kitakyushu Branch Office	System development, computer educational services, internet services, and all incidental work related to the preceding items
2		ISHIDA PATENT OFFICE	Proxy for application procedures for patents and registration of utility models, designs, and trademarks, consulting services on filing patent applications
3		PLANTMAKE RISE	Development of coating agents for incinerator facilities, development of structural calculation software using 3D scanners
4		KOISHI CO., LTD	Development of technologies for application on construction sites
5		AISIN CORPORATION	Development of elemental technologies, such as image recognition/spatial recognition, and vehicle control
6	Semiconductor Center	Security Information Laboratory	Systems development and maintenance (24 hours a day, 365 days a year)
7		K2R Inc.	Research and development on water generation equipment containing radical species using catalytic reactions
8	IT Advancement Center	Windy Co.,Ltd.	Development of software used at hospitals and pharmacies, development of work analysis software used at automobile plants
9		Mishimakosan Co.,Ltd.	Development and manufacturing of automatic drug dispensers to remove wrappers and pharmaceutical-related equipment
10		● RoboPlus Hibikino Co.,Ltd.	Design, manufacturing, and sales of mechatronics, consulting services
11		ITS Inc.	Design and development of embedded systems, and research and development on integrated circuits for semiconductors and other electronic components
12		Synkom Co., Ltd.	Design contracts for semiconductor and AI services and solutions
13	Business Venture Support Center	● Kankyou Photonics Co.,Ltd.	Research, development, and sales of LED light sources for plant growth
14		Huarenfuwu Co., Ltd	Research on marketing strategies to attract and employ international students
15		● BE Corporation	Research and development on image processing systems and software
16		● Technology for Laboratory Inc.	Development and sales of clinical engineering educational equipment and optical transmission bio-signal measuring devices
17		● BraTech Co.,Ltd.	Development of web systems, academic solution programs
18		Anera Tax Corporation	Auditing services, tax document preparation, tax proxy services, tax consulting services
19		AKSystem Co.,Ltd	Research and development on applications for new industrial fields (Medical and welfare field), such as techniques to fabricate manufacturing equipment for semiconductors
20		● Artix,inc	Research and development on IoT, artificial intelligence, blockchain technology, other
21		HOKOSHA TECHNOLOGIES CO.,LTD	Research and development on curved surface wiring technologies using molecular adhesion technologies and high-luminance, highly-reliable LED lighting
22		● Rare Metal Research and Development Inc.	Commercialization of lithium adsorbent through high-volume synthesis
23		ENVIRONMENT ENERGY CO.,LTD	Development and practical applications of bio-jet fuel, development of high-quality bio-diesel fuel
24		● Hibikino electronic corporation	Development of electrical field resonance-type bio-sensing and sensing data analysis systems
25		Q-Cul LLC.	Research and development on embedded software
26		WORKS Co.,Ltd	Development of a self-propelling capsule endoscope for the gastrointestinal tract using wireless power transfer (WPT) technology
27		● Robo science CO.,LTD	Development of small underwater robots (robots for cleaning ship bottoms, other)
28		Apollo Japan Co,Ltd	Development of basic technologies for screen codes and autonomous driving
29		HM Connect	Verification of the effectiveness of disinfectants, antibacterial and deodorizing solutions and development of products with long-lasting and sustained effects Development of LED light staging devices featuring laser-engraved patterns inside crystal glass
30		● Mathematical science labo	Research and development projects related to mathematical sciences
31		Organization for Career Education & Support (OCES)	Career guidance in secondary education, career education, and education for career counseling
32		● Hynts Tech Corporation	Development, manufacturing and sales of tools using nanostructures for introducing substances into cells or extracting intracellular substances
33		Kusakakikaku	Research and development on no-slip sock materials and designs for older people and children, and other related products
34		LOVO & Co.	Development of smart factories using production equipment on the cloud
35		Noh-En,LLC	Research and development on the use of weather data in agriculture
36		The 4Th-Wave Partnes.co	Demonstration projects for software development systems associated with automation and energy efficiency systems using robots
37		● Co-Creation Technology LLC	Research and development on software for VR and online systems, event production, and consulting services on 3D printing technologies
38		SKO Co., Ltd.	Collaborative research with universities in the Science and Research Park to improve the efficiency of system management in automotive production processes
39	Technology Development and Exchange Center	Shikino High-Tech Co.,LTD	Design/manufacturing/control of semiconductor equipment, LSI circuit design/layout, other
40		YOSHIKAWA KOGYO RF SOLUTION CENTER	Research and development projects on RF-ID
41		C&G SYSTEMS INC.	Development of CAD/CAM software for mold design and processing
42		Shabondama Soap Co.,Ltd.	Manufacturing and sales of additive-free cosmetic soap, household cleaners, fire retardants, other
43		TORICO LTD	Development and repair of electrical parts
44		● FILTOM, INC.	Development, manufacturing, and sales of cosmetics using placenta extract (placenta fluids from pigs)
45		● Secure Cycle Inc.	Development of general platforms for behavior recognition technologies and security
46		KOA CORPORATION	Information collection and information exchange on electronic parts, sensor elements, and sensor modules, joint industry-academic development

* ● Indicates new business from KSRR ventures



【 FAIS 】



【 KSRP 】

■ Secretariat

General Information for the Kitakyushu Science and Research Park

E-mail : info@ksrp.or.jp

General Affairs Office TEL +81-93-695-3111 FAX +81-93-695-3010

Kitakyushu Science and Research Park, Collaboration Center 1st Floor,
2-1 Hibikino, Wakamatsu-ku, Kitakyushu 808-0135

Inquiries about the Media Center

Media Center TEL +81-93-695-3150 FAX +81-93-695-3152
Library TEL +81-93-695-3151 FAX +81-93-695-3152

Kitakyushu Science and Research Park, Media Center 2st Floor,
1-3 Hibikino, Wakamatsu-ku, Kitakyushu 808-0135

■ Green Innovation Promotion Division

Inquiries on the use of research content at universities, industry-academia collaboration, and other R&D projects

E-mail : iac@ksrp.or.jp

Collaboration Center

Collaboration Department TEL +81-93-695-3006 FAX +81-93-695-3018
Business Promotion Department TEL +81-93-695-3011 FAX +81-93-695-3018

Kitakyushu Science and Research Park, Collaboration Center 2st Floor,
2-1 Hibikino, Wakamatsu-ku, Kitakyushu 808-0135

Inquiries about R&D, human resources development, and other business operations in the automotive fields

E-mail : car@ksrp.or.jp

Support Center for the Auto Industry Sector TEL +81-93-695-3685 FAX +81-93-695-3686

Kitakyushu Science and Research Park, Collaboration Center 2st Floor,
2-1 Hibikino, Wakamatsu-ku, Kitakyushu 808-0135

Inquiries about research and development, human resources development and training in the semiconductor field

E-mail : ksnet@ksrp.or.jp

Semiconductor Industry Support Center TEL +81-93-695-3007 FAX +81-93-695-3686

Kitakyushu Science and Research Park, Collaboration Center 2st Floor,
2-1 Hibikino, Wakamatsu-ku, Kitakyushu 808-0135

Inquiries about introducing robots and promoting DX (introducing IoT, digitalizing business operations, etc.)

E-mail : robodx@ksrp.or.jp

Robot & DX Promotion Center

Robot Industry Promotion Department TEL +81-93-695-3085 FAX +81-93-695-3525
DX Promotion Department TEL +81-93-695-3077 FAX +81-93-695-3667
DX Promotion Department (FAIS Higashida Office) TEL +81-93-695-3077

Kitakyushu Science and Research Park, Technology Development and Exchange Center 1st Floor,
8-1 Hibikino-kita, Wakamatsu-ku, Kitakyushu 808-0138
Kyushu Human Media Creation Center
1-5-7 Higashida, Yahatahigashi-ku, Kitakyushu 805-0071

Inquiries related to establishing new businesses and management of SME

E-mail : k_info@ksrp.or.jp

SME Support Center TEL +81-93-873-1430 FAX +81-93-873-1450

Kitakyushu Techno Center 1st Floor,
2-1 Nakabarushin-machi, Tobata-ku, Kitakyushu 804-0003



ACCESS

By Public Transportation By Car

- Bus stop at JR Orio Station ————— City Bus, Nishitetsu Bus —————> Gakkentoshi(KSRP) Hibikino *Approx. Time : 20 min.
- Bus stop at Kitakyushu Airport ————— Nishitetsu Bus —————> Gakkentoshi(KSRP) Hibikino *Approx. Time : 80 min.
- Kitakyushu Urban Expressway Kurosaki Ramp Use the Kurosaki/Orio exit and head towards Orio
*Approx. Time : 20 min. from the Kitakyushu Urban Expressway, Kurosaki Ramp
- Center of Kokura —> Kitakyushu Urban Expressway Higashida Ramp —> Kurosaki Bypass Kogasaki Ramp —> Gakkentoshi(KSRP) Hibikino
*Time required: Approx. 30 min. from the center of Kokura