

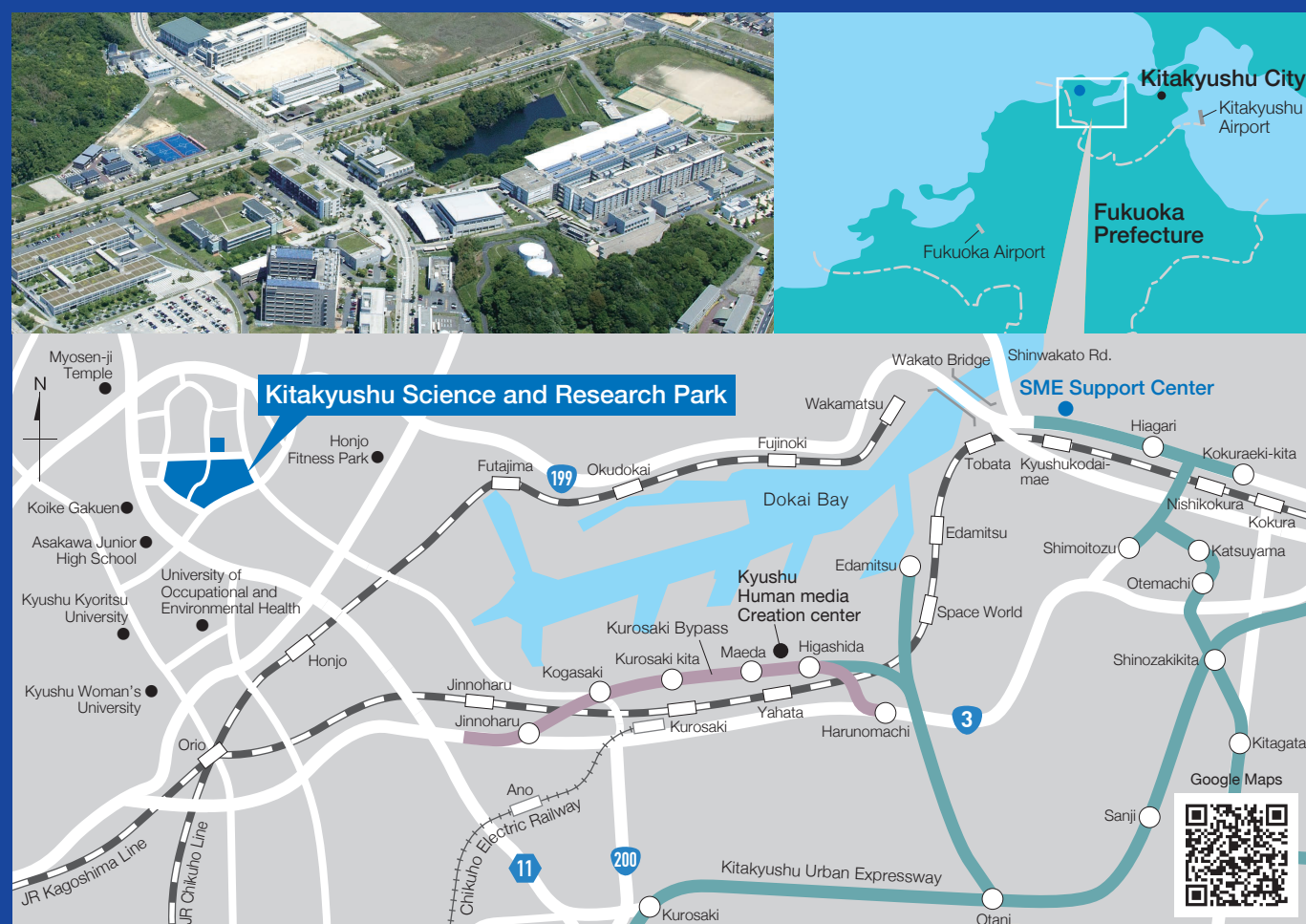
Contact Information

Kitakyushu Foundation for the Advancement of Industry, Science and Technology (FAIS)



KSRP

General Affairs Office TEL +81-93-695-3111 E-mail : info@ksrp.or.jp Kitakyushu Science and Research Park, Collaboration Center 1st Floor, 2-1 Hibikino, Wakamatsu-ku, Kitakyushu 808-0135	Media Center Library TEL +81-93-695-3150 TEL +81-93-695-3151 Kitakyushu Science and Research Park, Media Center 2nd Floor, 1-3 Hibikino, Wakamatsu-ku, Kitakyushu 808-0135
Collaboration Center TEL +81-93-695-3006 [Collaboration Department] E-mail : iac@ksrp.or.jp [Green Transformation Promotion Department] E-mail : fais-gxsuishin@ksrp.or.jp Kitakyushu Science and Research Park, Collaboration Center 2nd Floor, 2-1 Hibikino, Wakamatsu-ku, Kitakyushu 808-0135	Robot & DX Promotion Center [Robot Industry Promotion Department] TEL +81-93-695-3085 [DX Promotion Department] TEL +81-93-695-3077 Kitakyushu Science and Research Park, Technology Development and Exchange Center 1st Floor, 8-1 Hibikino-kita, Wakamatsu-ku, Kitakyushu 808-0138
Support Center for the Auto Industry TEL +81-93-695-3685 E-mail : car@ksrp.or.jp Kitakyushu Science and Research Park, Collaboration Center 2nd Floor, 2-1 Hibikino, Wakamatsu-ku, Kitakyushu 808-0135	SME Support Center TEL +81-93-873-1430 E-mail : k_info@ksrp.or.jp Kitakyushu Techno Center 1st Floor, 2-1 Nakabarushin-machi, Tobata-ku, Kitakyushu 804-0003
Support Center for the Semiconductor Industry TEL +81-93-695-3007 E-mail : ksnet@ksrp.or.jp Kitakyushu Science and Research Park, Collaboration Center 2nd Floor, 2-1 Hibikino, Wakamatsu-ku, Kitakyushu 808-0135	



ACCESS

- **By Public** Bus stop at JR ORIO Station → City Bus, Nishitetsu Bus → Gakkentoshi (KSRP) Hibikino Approx. Time: 20 min.
Bus stop at Kitakyushu Airport → Nishitetsu Bus → Gakkentoshi (KSRP) Hibikino Approx. Time: 80 min.
- **By Car** Kitakyushu Urban Expressway Kurosaki Ramp Use the Kurosaki/Orio Exit and head towards Orio Approx time: 20 min,
from the Kitakyushu Urban Expressway, Kurosaki Ramp
Center of Kokura → Kitakyushu Urban Expressway Higashida Ramp → Kurosaki Bypass Kogasaki Ramp → Gakkentoshi (KSRP) Hibikino
Time required: Approx. 30 min. from the center of Kokura

Issued in August 2024

KSRP

KITAKYUSHU SCIENCE AND RESEARCH PARK

GUIDE
BOOK
2024-2025

Innovation Hub for Emerging Industries & Cutting-edge Scientific Research

The Kitakyushu Science and Research Park, which opened in April 2001 in Kitakyushu City (Wakamatsu Ward), serves as an innovation hub dedicated to advancing research and development. This center facilitates collaboration between industry and academia, driving the creation of new industries and evolution of cutting-edge technologies with an Asia-centric approach. This is the only campus in Japan where national, public, and private universities, research institutions, and leading companies in science and engineering engage in dynamic educational and research activities focused on cutting-edge scientific technologies, especially in the environmental and information fields.

Utilizing the “intelligence” of universities to promote local industries and science

- Technologies research center open to Asia
- Promoting the Creation of new industries
- The further development of technology



Construction of a cutting-edge industrial city in Asia that creates new technology and enriches lives



[Features of Kitakyushu Science and Research Park]



Universities and Research Institutes Related to Science, Engineering and Research Departments of Companies Located on Campus

- National, municipal, and private universities (1 faculty,4 graduate schools)
Faculty and Graduate School of Environmental Engineering, The University of Kitakyushu
Graduate School of Life Science and Systems Engineering, Kyushu Institute of Technology
Graduate School of information, Production and Systems, Waseda University
Graduate School of Engineering, Fukuoka University
- Public and private research institution(13research Institutes)
- Companies involved in research and development (52companies)
(As of August 2024)



Exchange and Collaboration among Researchers, Staff, and Students

- Joint research and faculty exchanges among participating universities
- Transferable credits to other universities
- Operating joint graduate school programs of participating universities on the campus
Joint Graduate school Intelligent Car, Robotics & AI



Common Educational and Research Principles among Universities on Campus

- Conducting advanced education and research in the fields on cutting-edge science technology
- Promotion of collaboration between industry and academia
- Nurturing an entrepreneurial spirit
- Establishing a center for academic research in ASIA



Cooperative Campus Management & Common Use of Facilities

- The Kitakyushu Science and Research Park steering committee is composed of representatives from universities within the campus, and plans for joint endeavors
- Common use of libraries, information
Processing facilities, convenient facilities, and others

Kitakyushu Science and Research Park Project

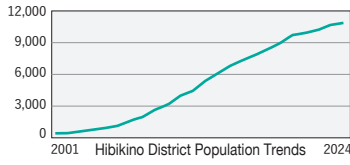
- Fundamental policy**
The Kitakyushu Science and Research Park draws inspiration from the rich natural and urban environment of the surrounding area in promoting the concept of “mixed-use development”, where we have combined a concentration of educational and research institutes engaged in cutting-edge science and technology with a favorable and advantageous residential area.
- Development areas** : western section of Wakamatsu, Northwestern section of Yahatanishi
- Total development** : Approximately 335 ha
- Construction schedule** :
1st Stage Project (Approximately 121 ha) 1995-2006 ※Project completed
Developer : Urban Renaissance Agency
2nd Stage Project (Approximately 136 ha) 2002-2018
Developer : City of Kitakyushu
3rd Stage Project (Approximately 68 ha)
Under Construction
River improvement (Approximately 10 ha)

Thriving Research & Development Hub of Hibikino

Development projects have attracted universities, research institutions, and companies to Hibikino, shaping the landscape and defining the character of the area today. With the development of the Hibikino area for residential use, the number of residents has grown, leading to the opening of the first new public elementary school in 15 years (Kitakyushu Municipal Hibikino Elementary School) in 2017. Today, there are about 1,500 students attending the school. The steady influx of new commercial facilities is also driving the growth of the area into a cohesive, thriving community.



Hibikino Elementary School



- Daytime Population of Kitakyushu Science and Research Park**
Approximately 3,500 (As of May 1,2024)
Students 2,503 (including 826 foreign students)
Faculty members 170 (including 24 from industry)
Researchers 168 (including 47 foreign researchers)

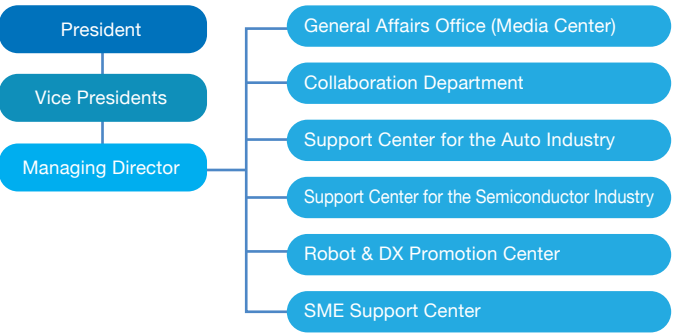
Operation and management of the Kitakyushu Science and Research Park

The Kitakyushu Foundation for the Advancement of Industry, Science and Technology (FAIS) is responsible for the management and operation of the Kitakyushu Science and Research Park. FAIS strives to promote the advancement of industrial technology and the growth of a vibrant regional business community by supporting collaboration in scientific research and development between industries, academia, and governmental bodies in the Kitakyushu region.



- President** Morio Matsunaga
- Board of Directors, etc.**
[Academia] Vice President of Kitakyushu Science and Research Park participating universities
Presidents of Science and Technology universities in Kitakyushu City
[Industry] The Chamber of Commerce and Industry, and other business organizations
[Administration] Kitakyushu City, Fukuoka Prefecture

FAIS Organizational Structure



Universities, research institutes, companies, and facilities for industry-academia cooperation in KSRP

1 The University of Kitakyushu



Faculty of Environmental Engineering

[Student capacity: 1020]

- Department of Chemical and Environmental Engineering
- Department of Mechanical System Engineering
- Department of Information and Media Engineering
- Department of Architecture
- Department of Life and Environment Engineering

Graduate School of Environmental Engineering

[Student capacity: 346]

- Graduate Programs in Environmental Systems
- Graduate Programs in Environmental Engineering
- Graduate Programs in Information Engineering

2 Kyushu Institute of Technology



Graduate School of Life Science and Systems Engineering

[Student capacity: 352]

- Department of Biological Engineering
- Department of Human Intelligence Systems
- Department of Life Science and Systems Engineering

3 Waseda University



Graduate School of Information, Production and Systems

[Student capacity: 460]

- Information Architecture
- Integrated Systems
- Production Systems

4 Fukuoka University

Graduate School of Engineering

[Student capacity: 14]

- Graduate Program of Recycling and Eco-Technology
- Energy and Environment Systems

A Collaboration Center

[Collaboration Center Building 1]



Core Facilities for pursuing research among industry, academia and government

The Fukuoka Research Commercialization Center for Recycling Systems and other research institutes, companies conducting cutting-edge research, and Graduate School of Engineering, Fukuoka University are located in the Center. In addition, the Collaboration Center is also equipped with a communication space "HIBIKINO ODORIVA", conference room and seminar room.

- Laboratories (31 rooms)
- Conference room, Seminar room(S,M)

B Semiconductor Center

[Collaboration Center Building 2]



Facilities to support research and development of semiconductor microfabrication technology

This facility is for research and development of semiconductor manufacturing related fields by companies and universities. The facility offers use of high-precision machinery for research and development related to trial manufacturing of ICs and MEMS and is equipped with laboratories.

- Laboratories (7rooms)
- Shared micromachining devices for ICs and MEMS (Electron beam drawing apparatus, ion implanters, double-sided exposure apparatus, rapid heat treatment apparatus (RTA), dicing saw, bonding equipment, etc.)

C IT Advancement Center

[Collaboration Center Building 3]



Facilities for conducting research and development one networks and semiconductor design

This facility is for research and development related to semiconductor design technology and advanced information and communication technology by companies and universities.

- Laboratories (34rooms)
- Facilities for R&D semiconductor design

D Business Venture Support Center

[Collaboration Center Building 4]



Facilities for support R&D and commercialization for starting up new businesses from campus ventures

This facility provides general office clerical, mechanical and chemical laboratories and small booth units are available in the joint laboratory.

- Laboratories(36rooms) Large Laboratories, Chemical Laboratories
- Conference room (S,M)
- Collaborative Laboratories (10 booths)
- Share office

E Technology Development and Exchange Center

[Collaboration Center Building 5]



Facilities to support technology innovation and promote DX in the robotics and automotive industry electronics fields

This Center houses facilities to support technology innovation for the introduction of robots and automotive electronics and to promote DX introducing IoT and digitalizing business operations). The Center is also furnished with guest accommodations for visitors who stay at KSRP to engage in research.

- Laboratories(48rooms) Large Laboratories, Chemical Laboratories
- Guest Room(9rooms) 8 single rooms, 1 twin room
- Conference room (S,M)
- Collaboration room(1rooms)

Laboratory Rental Fees

©2,000yen/m² per month (Common fees : 500yen/m² month)
(Example : In the case of a laboratory that is 50m² the approximate fee is 1.5 million yen per year (common fees are net included))

*FAIS is solely responsible for the comprehensive management and operation of all its joint-use facilities designated by the City of Kitakyushu.

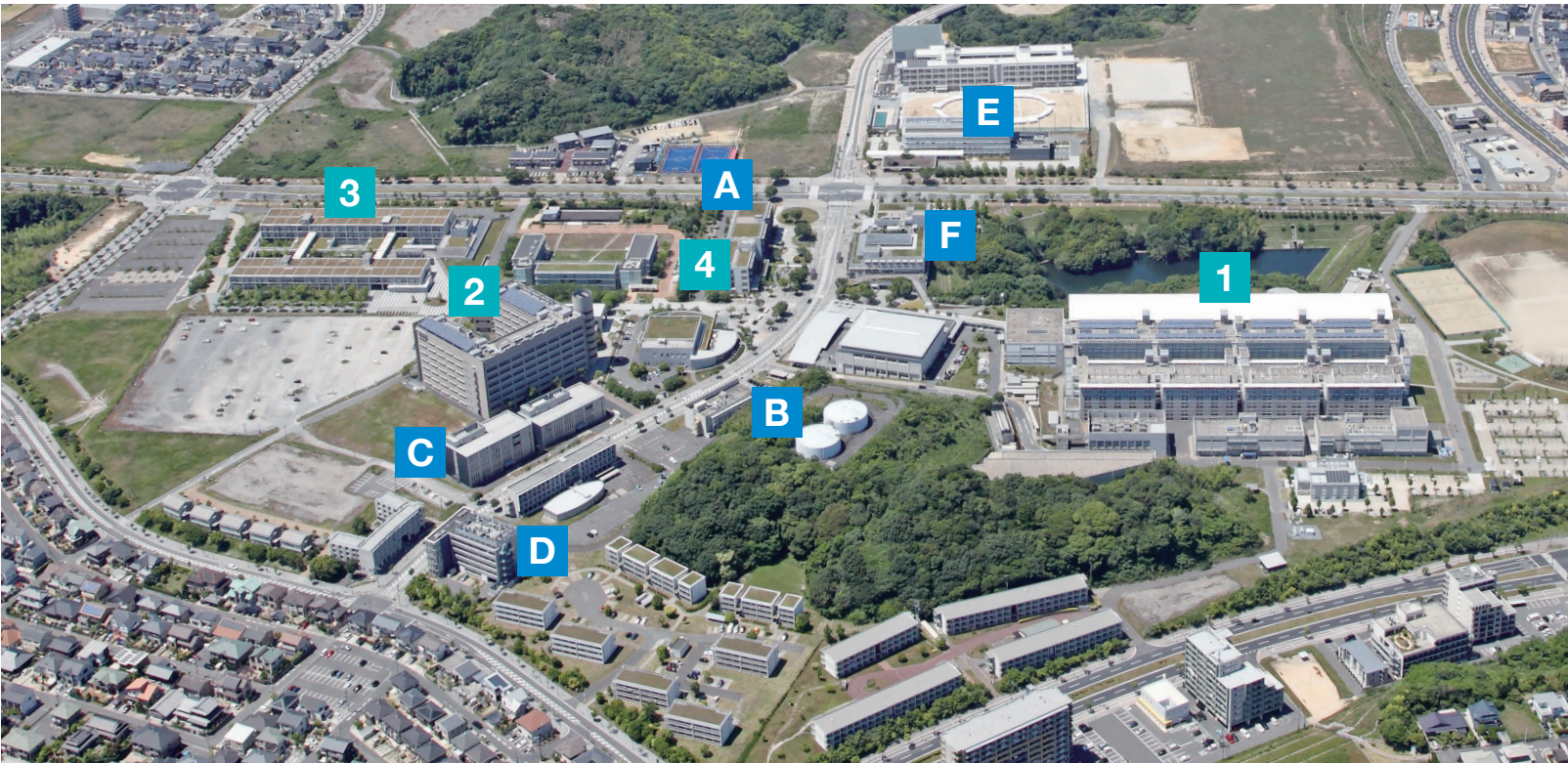
F Media Center

[Library, information Processing Facility]



Multimedia station, integration, and transmission of Information

In addition to its function as a library for collecting and providing academic information and as an educational facility for information processing, the Media Center houses facilities for teleconferencing and the production of information content.



Numbers of students and professors

(As of May 1, 2024)

University	Undergraduate	Postgraduate	PhD	Research students	Special research students	Total number of students	Number of professors
The University of Kitakyushu Faculty of Environmental Engineering	1,123 (37)	—	—	1 (1)	0 (0)	1,124 (38)	84
The University of Kitakyushu Graduate School of Environmental Engineering	—	308 (36)	163 (142)	0 (0)	0 (0)	471 (178)	—
Kyushu Institute of Technology Graduate School of Life Science and Systems Engineering	—	240 (31)	104 (45)	4 (4)	2 (2)	350 (82)	45
Waseda University Graduate School of Information, Production and Systems	—	428 (404)	123 (120)	1 (1)	3 (3)	555 (528)	39
Graduate School of Engineering, Fukuoka University	—	3 (0)	0 (0)	0 (0)	0 (0)	3 (0)	2
Total	1,123 (37)	979 (471)	390 (307)	6 (6)	5 (5)	2,503 (826)	170

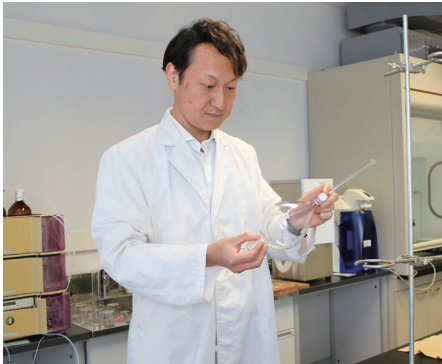
number in () indicates the number of foreign students

Industry Insights from Companies in KSRP

SHABONDAMA SOAP Co., Ltd.

Shabondama Soap is a leading, long-standing detergent manufacturer in Kyushu known for its additive-free, eco-friendly soaps. Continuing its trajectory of sustained growth, Shabondama Soap opened the “Soap Research Center” in KSRP in 2011. Soap technology is used at the center in the development of a wide array of unique products, such as a soap-based fire extinguishing agent. Takayoshi Kawahara, Director and Head of Research and Development at Shabondama Soap, shared insights with FAIS about the company’s move to KSRP and recent developments.

Q. What were the reasons behind your decision to set up a research center in KSRP?
A. Shabondama Soap was founded in 1910. We celebrated our 100th anniversary in 2010 and decided to intensify our focus on research on soap technology. We opened the Soap Research Center in KSRP in 2011 to serve as a focal point for innovative fundamental and applied research on soap. Prior to this, we had already started researching soap-based fire extinguishing agents in 2003 in collaboration with Professor Kazuya



Uezu from the Faculty of Environmental Engineering at The University of Kitakyushu (now Vice President). We were also involved in several collaboration projects between industry and academia with The University of Kitakyushu and the Kyushu Institute of Technology, which both have campuses in KSRP. Our decision to move here was driven by our ambition to become the world’s leading soap manufacturer in the field of technology by conducting scientific projects in KSRP.

Q. What research are you involved in?
A. Soap is a mixture derived from natural fats and oils. At the Soap Research Center, we break down soap components to examine their effects, focusing specifically on properties like cleaning efficacy and foaming texture. Surprisingly, genuine additive-free soaps are extremely rare, as many contain synthetic surfactants and added fragrances. Natural fats and oils have a distinctive smell, so we are researching ways to refine them to minimize odors. We are also investigating the environmental impact of surfactants, soap-based anti-fungal agents, and soap-based fire extinguishing agents for peat fires in Indonesia.



Q. What advantages have you found being located in KSRP?
A. The biggest advantage is the close proximity to university professors and the added convenience of Shabondama Soap’s head office being a short 15-minute drive away. It can be difficult to access information from the outside if you stay within the walls of a company. But being in a separate location away from the head office offers a number of advantages and lets us tap into a wealth of information from universities, Kitakyushu City, and the Kitakyushu Foundation for the Advancement of Industry, Science and Technology (FAIS). The presence of a wide range of companies and university professors from different fields in KSRP makes it a highly attractive environment for networking and collaboration.

[Company Overview]
SHABONDAMA SOAP Co., Ltd.
President and representative director: Hayato Morita
Headquarters: 2-23-1 Minamifutashima Wakamatsu-ku, Kitakyushu City, 808-0195
<https://www.shabon.com/>

Research Institute

Name of Research Institution	Location	Research Content
Institute of Environmental Science and Technology, The University of Kitakyushu	The University of Kitakyushu	Strategic promotion of research and technology development in the fields of the environment, energy, biomaterials, information, robot technologies, and others to respond to changes in the global environment and the needs of local society
Institute of Environmental Science and Technology, The University of Kitakyushu Green LPG Lab	Business Venture Support Center	Research on new LP gas technologies
Fukuda Lab, The University of Kitakyushu	IT Advancement Center	Research on commercializing “adhesive-molding decorative core materials” for wooden shafts in apartment buildings
Kyushu Institute of Technology, Research Center for Next-Generation Power Electronics	Kyushu Institute of Technology and Semiconductor Center	Research on next-generation power electronics focusing on power semiconductors that can contribute to the development of a low-carbon society, such as the promotion of energy savings and the application of advanced technologies for electric power and natural energy
Center for Future Society Implementation for Robotics,Kyushu Institute of Technology	Kyushu Institute of Technology and IT Advancement Center	○Development and practical application of specialized environmental robots capableof operating in extreme environments ○Development and practical application of medical and nursing care robots ○Development and practical application of technologies supporting factory automation ○Development of open software capable of assuring quality to support the practical application of reliable robots
Information,Production and Systems Research Center ,Waseda University	Information, Production and Systems Research Center, Waseda University	World-class , advanced research and human resources development in the fields of automotive electronics and LSI
Academic, Industrial and Govenmental Liaison Center, Fukuoka University Kitakyushu Industry-Academia Cooperation Promotion Office	Collaboration Center	Expansion of the promotion of en vironmental industr ies through industr ial, academic, and go vernment collaboration to match corporate needs of environmental industries and the policies and seeds of municipal governments
Fuzzy Logic Systems Institute Imasato’ s Laboratory	Semiconductor Center	Test studies on information processing systems that apply fuzzy logic
HIBD Laboratory Association	Collaboration Center and Business Venture Support Center	Research and development on the manufacturing of liquid fuel from renewable resources and carbon dioxide
Japan unmanned Vehicle exploration agency	Collaboration Center	Advancing and disseminating research on unmanned vehicles by serving as a space for sharing knowledge and information on surveys, research and techno - logical improvements in all areas related to unmanned vehicles
Fukuoka Research Commercialization Center for Recycling Systems	Collaboration Center	Supporting R&D and b usiness de velopment by industries , academia, go vernment and the pub lic that are engaged in the development of recycling technologies and the establishment of social systems to build a resource-recycling society
Martial Arts School	Business Venture Support Center	NPO applying small brain activity sensors to measure blood flow in the prefrontal cortex during exercise and movement
Asobito Manabi (Institute for Playing and Learning)	Business Venture Support Center	Specified non-profit corporation engaged in practical studies on promoting optimal ways to reduce food waste in communities using bamboo compost

Companies

	Company Name	Current Business Content
Collaboration Center	ISHIDA PATENT OFFICE	Proxy for application procedures for patents and registration of utility models, designs, and trademarks, consulting services on filing patent applications
	PLANTMAKE RISE	Development of coating agents for incinerator facilities, development of structural calculation software using 3D scanners
	AISIN CORPORATION	Development of elemental technologies, such as image recognition/spatial recognition, and vehicle control
Semiconductor Center	KMEC Co., Ltd.	Design and manufacturing of electrical, instrumentation, and factory automation equipment Design and manufacturing of material handling equipment Equipment installation and maintenance services Design and manufacturing of computer systems
	Security Information Laboratory	Systems development and maintenance (24 hours a day, 365 days a year)
	K2R Inc.	Research and development on water generation equipment containing radical species using catalytic reactions
IT Advancement Center	Power Diamond Systems, Inc.	Research and development on diamond semiconductor devices
	Mishimakosan Co.,Ltd.	Development and manufacturing of automatic drug dispensers to remove wrappers and pharmaceutical-related equipment
	ITS Inc.	Design and development of embedded systems, and research and development on integrated circuits for semiconductors and other electronic components
	Huarenfuwu Co., Ltd	(1) Services connecting top talent from overseas partner agencies (in China, Korea, India, Nepal, Indonesia) to meet the growing demand of Japanese semiconductor design firms for skilled workers (2) Services facilitating the recruitment of top talent for related companies by placing local students as interns in universities in KSRP through partnerships with higher educational institutions overseas (China, Korea, India, Nepal, Indonesia)
	Mathematical science labo	Research and development projects related to mathematical sciences
	AI Samurai Inc.	Development and sale of patented systems using AI technology
	AISANTECHNOLOGY CO.,LTD.	Development and creation of high-precision 3D maps for autonomous driving, development of autonomous vehicles, proof-of-concept tests using autonomous vehicles, and support services
	Co-Creation Technology LLC	Research and development on software for VR and web systems, event production, programming classes, and consulting services on 3D printing and robotics technology
	Shikino High-Tech Co.,LTD	Design/manufacturing/control of semiconductor equipment, LSI circuit design/layout, other
	YOSHIKAWA KOGYO RF SOLUTION CENTER	Research and development projects on RF-ID
Technology Development and Exchange Center	C&G SYSTEMS INC.	Development of CAD/CAM software for mold design and processing
	Shabondama Soap Co.,Ltd.	Manufacturing and sales of additive-free cosmetic soap, household cleaners, fire retardants, other
	TORICO LTD	Development and repair of electrical parts
	FILTOM, INC.	Development, manufacturing, and sales of cosmetics using placenta extract (placenta fluids from pigs)
	Secure Cycle Inc.	Development of general platforms for behavior recognition technologies and security
	KOA CORPORATION	Information collection and information exchange on electronic parts, sensor elements, and sensor modules, joint industry-academic development
	SEIKO ELECTRIC CO.,LTD.	Provision of products and services through a unique information and control system, with a primary focus on infrastructure industries, including the power and environmental energy sector
	TAIYO NIPPON SANSO ATI CORPORATION	Design and production of equipment and devices using semiconductors and industrial gas, and development of control systems using ICT and digital transformation (DX) technologies



KSRP, the Ideal Environment for R&D

●R&D support
FAIS’s expert coordinators support the research and development needs of companies, including consultations on finding and connecting with university researchers and other partners, as well as business matching services (B2B). Companies may also apply for FAIS research and development subsidies (subject to eligibility).



●Robust research facilities
Companies and other tenants can utilize research facilities, including KSRP’s semiconductor chemical process room, yellow room, and assembly and measurement rooms.

●Customized office solutions
Offices are designed to align with research and development needs. Venture companies may qualify for rent reduction programs (max. 50%, subject to eligibility). Facilities also meet criteria for Kitakyushu City’s office relocation incentive grant (conditions apply).

●Extensive range of amenities
Meeting rooms, networking spaces, a gymnasium, fitness center, tennis courts, shower rooms, and a special library are available at no extra cost.

	Company Name	Current Business Content
Business Venture Support Center	BE Corporation	Research and development on image processing systems and software
	Technology for Laboratory Inc.	Development and sales of clinical engineering educational equipment and optical transmission bio-signal measuring devices
	BraTech Co.,Ltd.	Development of web systems, academic solution programs
	Anera Tax Corporation	Auditing services , tax document preparation, tax proxy services , tax con sulting services
	AK System Co.,Ltd	Research and development on applications for new industrial fields (Medical and welfare field), such as techniques to fabricate manufacturing equipment for semiconductors
	Artix,inc	Research and development on IoT, artificial intelligence, blockchain technology, other
	HOKOSHA TECHNOLOGIES CO.,LTD	Research and development on curved surface wiring technologies using molecular adhesion technologies and high-luminance, highly-reliable LED lighting
	Rare Metal Research and Development Inc.	Commercialization of lithium adsorbent through high-volume synthesis
	ENVIRONMENT ENERGY CO.,LTD	Development and practical applications of bio-jet fuel, development of high-quality bio-diesel fuel
	Hibikino electronic corporation	Development of electrical fi eld resonance-type bio-sensing and sensing data analysis systems
	WORKS Co.,Ltd	Development of a self-propelling capsule endoscope for the gastrointestinal tract using wireless power transfer (WPT) technology
	Robo science CO.,LTD	Development of small underwater robots (robots for cleaning ship bottoms, other)
	Apollo Japan Co,Ltd	Development of basic technologies for screen codes and autonomous driving
	HM Connect	Development of communities in the metaverse using virtual reality (VR) and augmented reality (AR) technologies
	Organization for Career Education & Support (OCES)	Career guidance in secondary education, career education, and education for career counseling
	Hynts Tech Corporation	Development, manufacturing and sales of tools using nanostructures for introducing substances into cells or extracting intracellular substances
	LOVO & Co.	Development of smart factories using production equipment on the cloud
	Noh-En,LLC	Research and development on the use of weather data in agriculture
	The 4Th-Wave Partnes.co	Demonstration projects for software development systems associated with automation and energy efficiency systems using robots
	SKO Co., Ltd.	Collaborative research with universities in the Science and Research Park to improve the efficiency of system management in automotive production processes
	On & On Co.,Ltd	Development of original Japanese confections using digital transformation (DX) technologies
	RoboPlus Hibikino Co.,Ltd.	Design, manufacturing, and sales of mechatronics, consulting services
	Synkom Co., Ltd.	(1)Development and design of semiconductors (2)Development, design, sale, export and import of semiconductor-related software and hardware (3)Design and development of deep-learning related software, hardware and datasets (4)Export and import of electronic devices and parts (5)General dispatch services in Japan and overseas (License no.: 14-301143)
	STRATOVISION	Development of advanced technologies for small weather balloons, and development and sale of ultrasonic anemometers
	Cocoplus Co., Ltd.	Research and development on raw materials for cosmetics and supplements
	Windy Co.,Ltd.	Development of software used at hospitals and pharmacies, development of work analysis software used at automobile plants
	Centassist Academy Co., Ltd.	Delivery of training programs for developing human resources in the (1) semiconductor design process and (2) semiconductor manufacturing process using experience and knowledge in semiconductor development
	Japan Quality Co.,Ltd.	Specialized transport, handling, installation, disassembly and maintenance of ultra-precision weighing equipment

(As of August 2024)